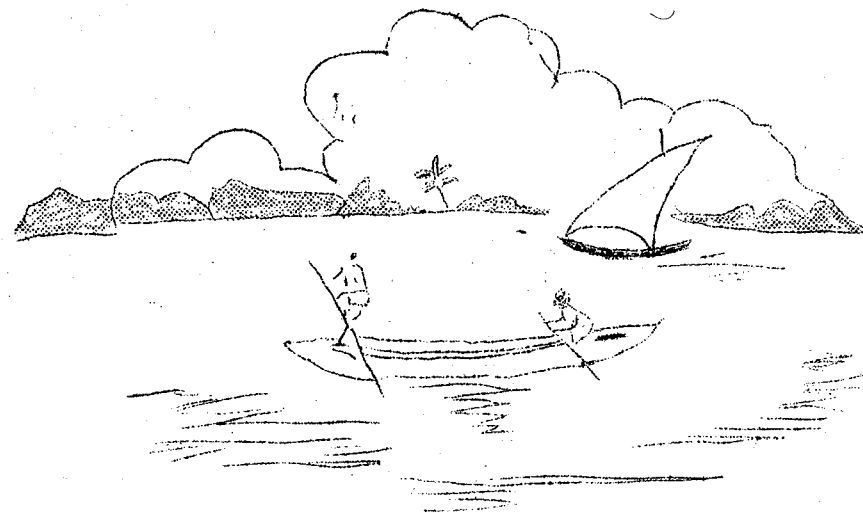


10044  
KAWAKO 21/1/64.



Syllabaire 1

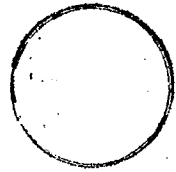
en

Bambara

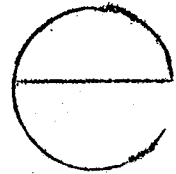
1963

# Les Voyelles

o



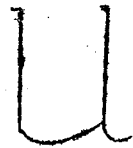
e



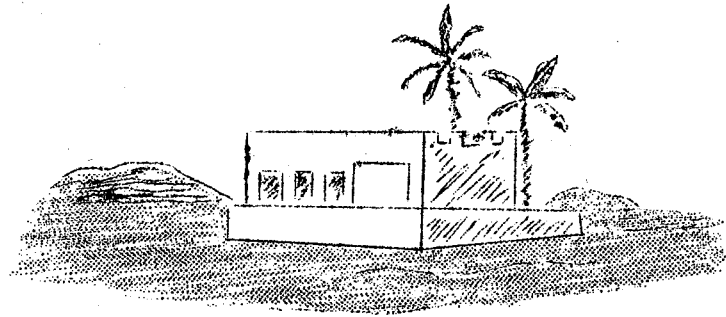
i



u



a



o
so
do

so

so do.

o so do.

o do.

so

o

do

do

so

o



o
so
moso

moso  
 moso do.  
 o moso do.  
 so do.  
 o so do.

o	do	so
do	so	moso



o
mo
go

mogo  
 mogo do.  
 o mogo do.  
 mogo do do.  
 o mogo do.  
 so mogo do.

mo	go	so	o
do			mogo



o ye so ye.

e
ye



o ye moso ye.



o ye mogo ye.

moso ye mogo ye.

o mogo ye moso ye.

moso

mogo



o
bo
lo

bolo

bolo do.

o ye bolo ye.

o ye moso bolo ye.

o ye mogo bolo ye.

o bolo do.

mo

so

do

go

lo

moso

bo

bolo

mogo

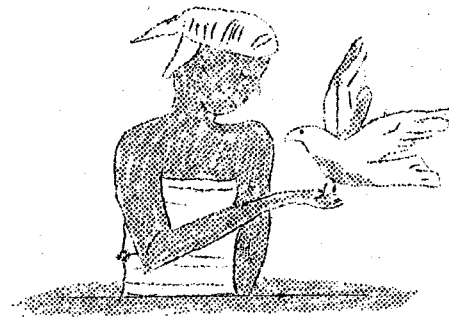


e
be

o
ko
no
kono

kono do.  
 o ye kono ye.  
 kono be moso bolo.  
 moso be so kono.  
 mogo be so kono.  
 kono be so kono.

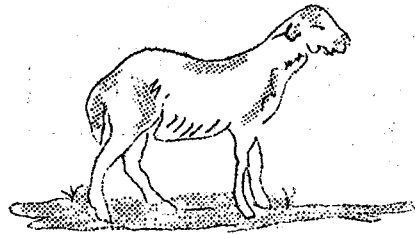
be	ko	so	no
ye	kono	be	ko
e	mogo	e	moso



e	fe
---	----

kono be moso bolo.  
 bolo be moso fe.  
 so be moso fe.  
 mogo be so kono.  
 moso be so kono.  
 kono be so kono.

fe	o	moso	bolo
be	so	bolo	kono
ye	do	kono	mogo



a
sa
ga

saga

saga do.

a ye saga ye.

saga be moso fe.

a be so kono.

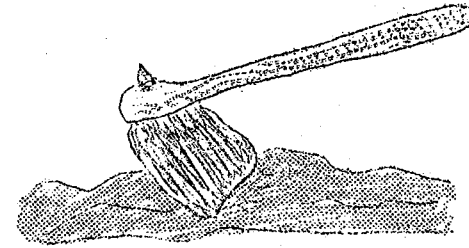
mogo be saga fe.

moso be saga fe.

saga be moso bolo.

kono be moso bolo.

be	so	ye	saga
sa	fe	bo	ga



a
da
ba

daba

daba be so kono.

daba be moso fe.

mogo be so kono.

kono be a bolo.

saga be a fe.

daba be a fe.

moso be a fe.

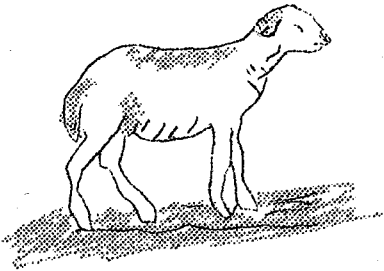
do	da	be	saga
bo	ba	fe	daba
ga	daba	da	kono

i

i ye moso ye.  
i ye mogo ye.  
daba be i fe.



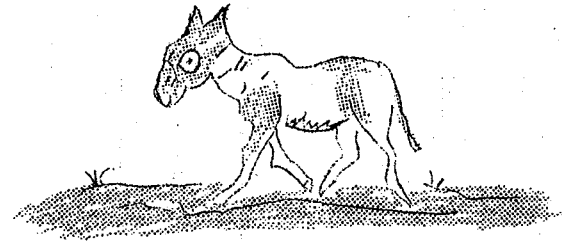
saga be i fe.  
bolo be i fe.



i ye moso ye.  
so be i fe.  
mogo be so kono.



saga o i a  
daba ko bolo da

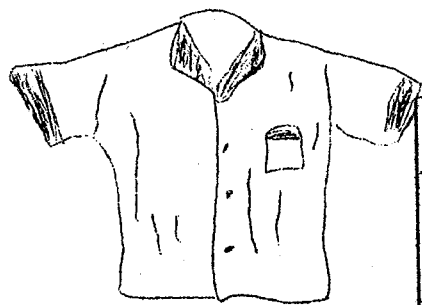
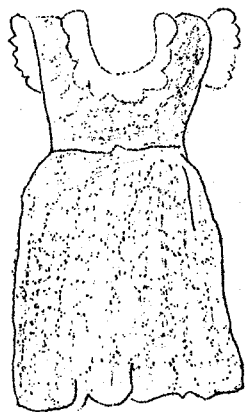


i  
li  
fa

fali

fali do be moso fe.  
fali be so kono.  
fali be mogo fe.  
daba be mogo fe.  
saga do be mogo fe.  
moso be fali fe.  
a be saga fe.

da sa fa  
i li fe  
daba saga fali



i
fi
ni

fini

fini do be moso fe.

o fini be so kono.

fini do be i fe.

fini be mogo do fe.

i be fini ni daba fe.

i be saga ni fali fe.

i be o be fe.

a	i	o	e
fa	fi	so	fali
da	ni	fe	fini

a fa sa da daba saga

fali saga daba ba ga

e fe be ye

i fi fali fini

fini li ni

o bo ko mo do

bolo kono mogo o moso

lo no go so moso

kono mogo moso bolo