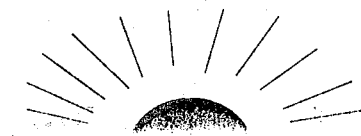


MASAKE



Daramani Tarawele

NSIIRIN, N Y'A DA...



KALAN DIYA

2003 san

Nsiriin :

N y'a da nin Masake la

Jon tun ye nin Masake ye ?

Masake Komayo tun be Komayola.

Komayo tun be a fa ka masayawolo kan.

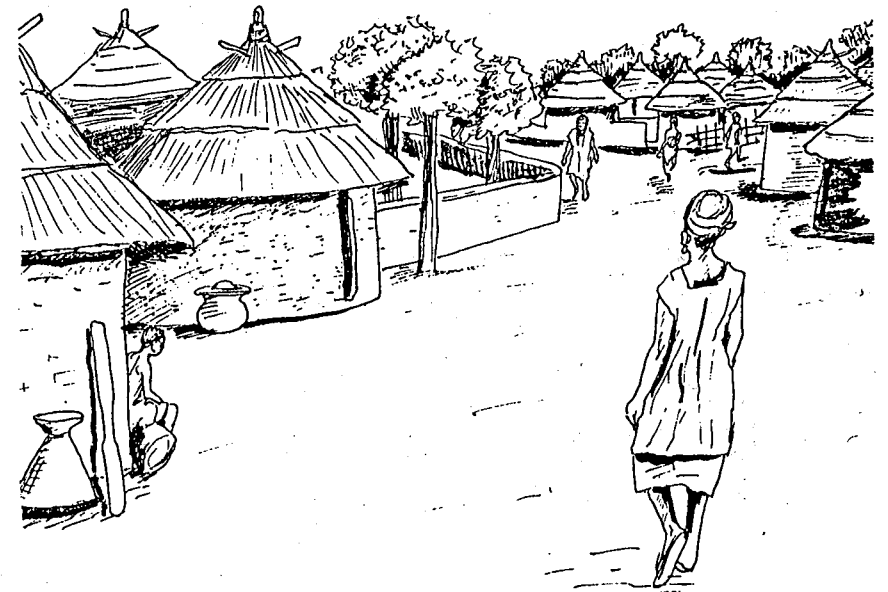
A ye si ni keneya soro Komayola,

Komayo tun be a fa ka masayasira kan,

A tun selen don a ka fasojama na,

A ka fasojama fana tun b'a fe.

O tun ye ko duman ye Komayola.



Nka hami kelen tun be kamayo fe.

Nka hami kelen tun ye jumen ye ?

Masa denke saba di Komayo ma.
 Komayo y'a denw lamɔ Kamayola,
 Fo denke saba ninnu sera furu ma.
 Komayo denke kelen tun ye Yoka,
 Do fana tun togo ko Yoma,
 Komayo denke kelen do ko Kama.

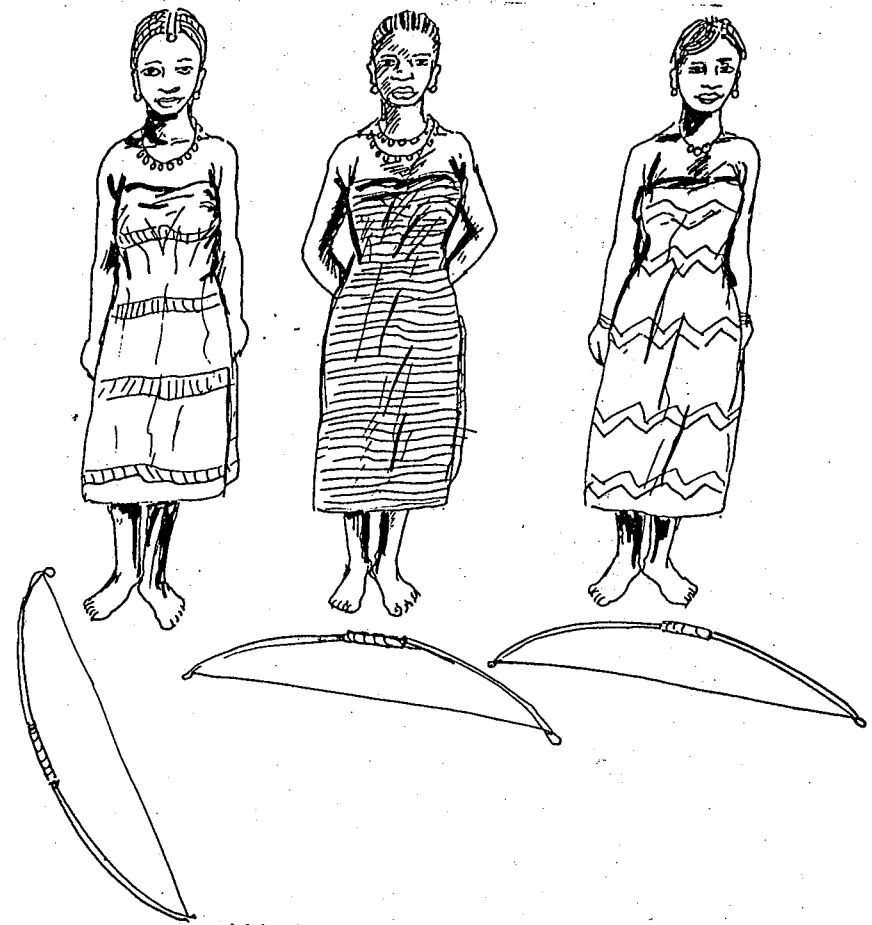


— Nin don Kamayo ko a be muso di u ma,
 Komayo ko a be muso nini u ye ke,
 Nka muso te jo u nekoro de,
 Walasa u ka u nenata ta nogon ne,
 A te son o kelen ka ke.
 Komayo bena mun fere tige ?
 Komayo ye Yoka wele,
 A ye Yoma fana wele,
 A y'a denke saba wele.
 Denke saba nana wele lamɛn ;

O diyara Komayo ye kosɓe.
 Kama, Yoma ni Yoka y'a lamɛn.
 Komayo ye kamalen saba laje.
 A y'u laje fefewuuuu !
 A ko muso tɛ aw si bolo,
 Fo aw bɛɛ ka muso furu.
 Denw ye Kamayo sɛbɛkoro fo ;
 O wale ye Masakɛ sewa.

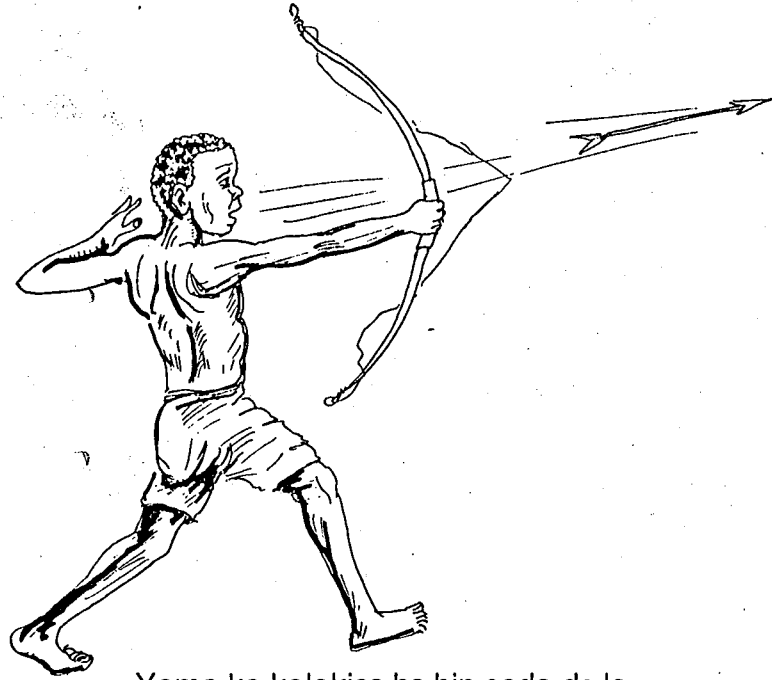


A sewalen ko denke saba ma :
 "Musu tɛna jira aw la,
 Si t'a bolo sin muso ma fana".
 Kama ye Yoma ni Yoka laje,
 Yoma ye Kama ni Yoka laje,
 Yoka ye Kama ni Yoma laje,
 Denke saba ye ɲogon file-file.

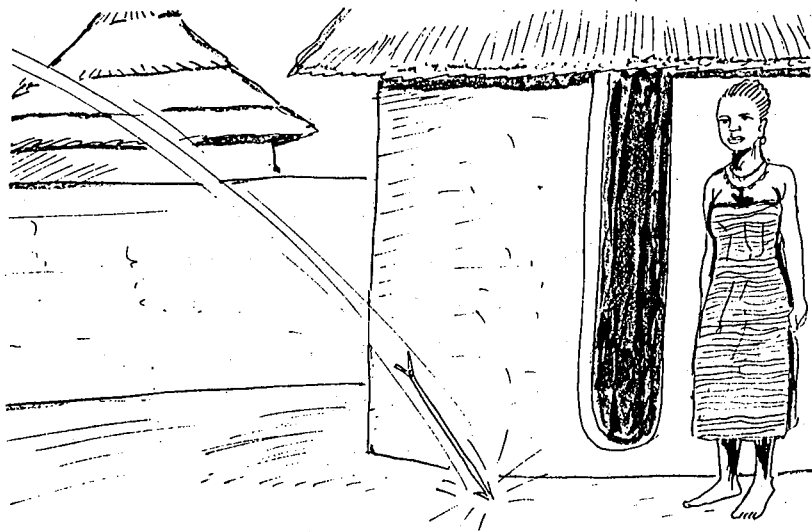


U kabakoyara u fa Komayo la.
 O la, Komayo k'u saba ma :
 "Kalakise bɛ di aw kelen-kelen ma,
 Ni kalakise dira aw kelen-kelen ma,
 Yoma, e bɛ i ka kaladen fili,
 Kama e bɛ i ka kaladen fili,
 Yoka e bɛ i ka kaladen fili,

Aw bɛɛ bɛ aw ka kalanden fili.
Kalakise bɛ taa bin muso ka soda la

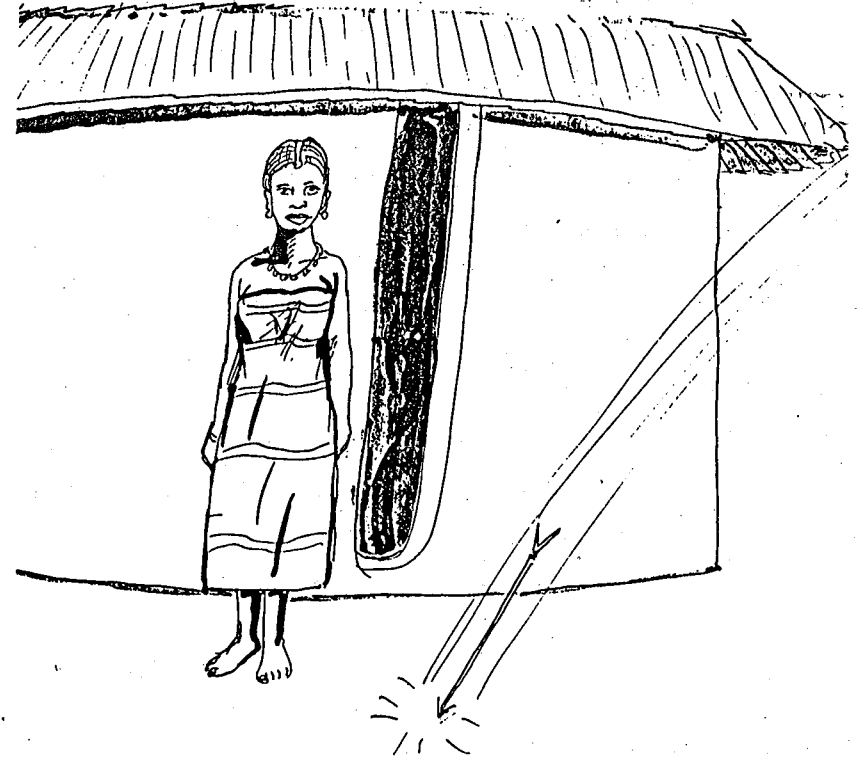


Yoma ka kalakise bɛ bin soda do la

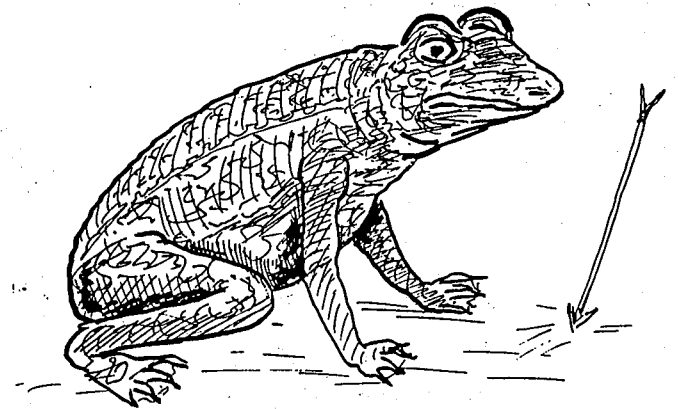


8

Yoka ka kalakise bɛ bin soda do la



Kama ka kalakise bɛ bin soda do la



9

A' bɛɛ n'aw muso ta nin cogo la.
Garijegɛw ye kelen ye wa ?
Yoma ka kaladen binna da min na,
O du muso dira Yoma ma.
Yoka ka kaladen binna da min ma,
O du muso dira Yoka ma.

Kama ka kaladen binna Ntori ka da ma.
Ntori furula Kama ma.
— Masake Kamayo ben'a mun jini ?
Komayo b'a ka wolo kan Komayola,
Komayola Masake Komayo sewara,
A denw ye muso furu Komayola.

Kama ye Ntori furu Komayola.
Masake denke ka Ntorimuso furu,
Masake ka son a denke ka Ntori furu,
Yoka ka son Kama ka Ntori furu,
Yoma ka son Kama ka Ntori furu.

Ko bɛɛ be soro ka ke Komayola.
Nin ma fosi kelen tiɲɛ Komayola
ɓɛɛmaya tor'a cogo la Komayola.



Masake yere k'a buranw ma Komayola :
Ko u ka u ka tobili folo ke,
Hali Ntori yere be tobili ke.
A na don ale fe n'a ka na ka di.
Masake ye malo di a buranmusow ma,
U y'a tobi tilelafana ye.
Tilelafanaduntuma a sera bɛɛ ta ma.

.Ntorimuso de ta diyara Masake ye.
 Aa ! nin kabakoya ye Masake soro.
 Ntori ka se ka nin dumanba tobi,
 Ntorimuso ye nemogoya soro,
 Tije na Ntori tolibolo ka di.
 Masake bena mun were nini ?



A ko buranmusow ka dulokiba kala,
 Ale Kamayo be dulokiba min don,
 Buranke ye fini fitinin di u ma,
 A ka kala ale Masake b'a don.
 O kelen, Kama taara i sigi a ka so,
 Fo a muso Ntori ka na a soro u ka so.
 Ntori y'i sigi Kama kerefe u ka so,
 K'i kan to a ma a kana kasi,
 Ko Kama kana sika ale la,
 Ko Kama ka sabali.
 Kama y'a muso Ntori lamn sa,
 A be kasi dabila o cogo la.



Su nana ko fo ka dugu tila,
 Ntori kansinamusow be lajeli la,
 Ka n'a laje Ntori be fini nin kala.
 A be dulokiba kala cogo di,
 Fo Masake k'a fo ko a ka ni,
 Cogo min a b'a fo u fana ta ka ni.
 Ntori ye fini tige k'a fili,
 Fije sinna k'a ke dulokiba ye,
 Ntori ka baara kera numanba ye,
 O diyara a ce Kama ye.

Dugu jlen bee taara ni i ta ye.
 Finikala walan dira Ntori ma.
 Yoka n'a muso sonna o ma,
 Komayala bee sonna o ma.

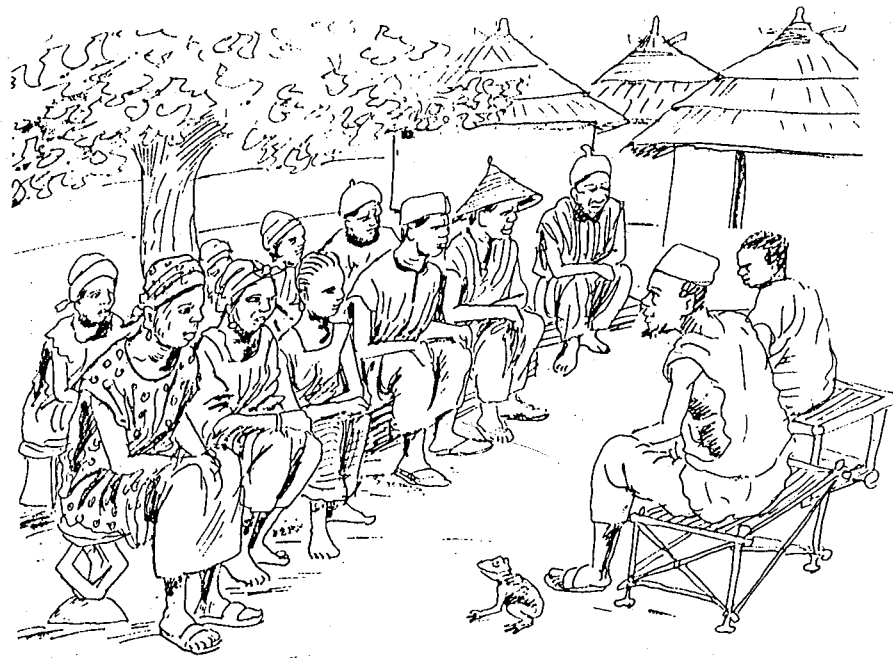


Masake be mun were nini tugun ?
 Masake Komaya be se ko la,
 A b'a fe k'a buranmusow don,
 A ye nenaje duman sigi senkan o la,
 A ko bee n'i muso ka taa nenaje don.



Kama be segin u ka so,
 Ntori be na u ka so,
 A be a ce Kama soro so,
 Kama b'a nefa u ka so.
 Ntori b'a fo u ka taa jogon fe.
 Komayala dugu nana je,
 Komaya bee dalaje.

Ntori ce kelen be,
 Tow ni musow tun don,
 U bee be yele Kama ma.
 Kama b'a don fen min don,
 O la, Kama te kuma.
 Nka fen do be gunununu.
 A b'a fo Kama tulo koro :
 "Kana siran fiyewu-fiyewu".
 Fijeba de be na don jama koro.



Kama fana te siran.
 Tow n'u musow be taa don na,
 Fijeba be wuli ka jama lasiran,
 Jama be bila yerejini na.
 Kama b'u ja farinya,
 K'ale Kama muso namankan don
 O be jama kabakoya.
 Doonin-doonin Ntori magalama bena ka don,
 A cejumannin be jama kabakoya.
 N ye nin bila yan.



Jininkaliw :
 Aw ye nsiirin faamu cogo di ?
 A'y'a ka jaabi jukoromadondon ni misaliw ye
 Bilasirikan jumen be bo nin nsiirin kono ?