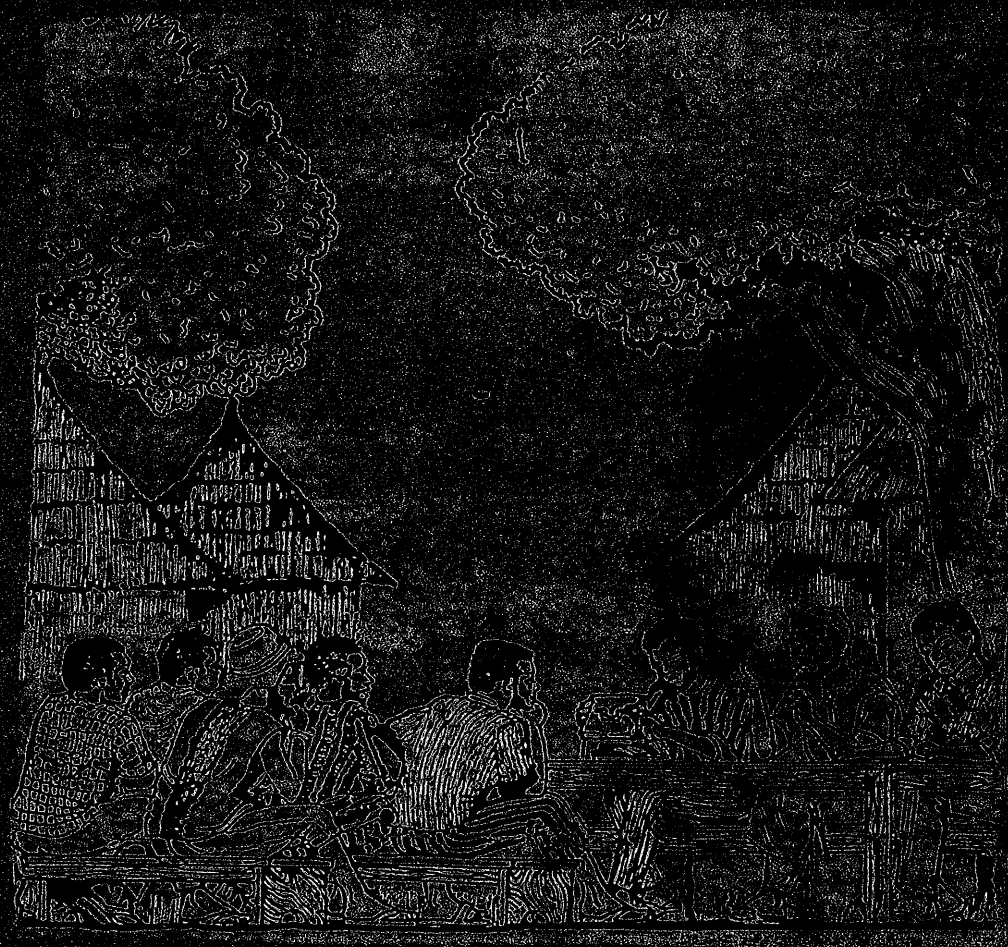


ODIK

marwande Jake

Duguyiriwa tən temesiraw



gafe in baabuw file nin ye

1. sabenni sariyaw ka taa nɛ1 ka bila nɛ5 nan
2. duguyiriwa tɔn tɛmesiraw. ka taa nɛ6 kabila nɛ11 nan

1

Sabenni Sariyaw

sigini

Bamanankan siginidenw ye mugan ni wolonwula ye
a b c d e f g h i j k l m n ^r o p r s
t u w y z.

sigini in tilalen be kuluba fila ye : dafataw ani dafalenw
dafataw ye mugan ye

b c d f g h j k l m n p o p r s t w y z.

dafalenw ye wolonwula ye

a e f i o o u

dafataw ye kulu fila ye : nunna dafataw ani dafata
gansaw

b c d f h j k l m n n p r s t w y z

nunna dafataw

nt - ntɔɔ, ntɔn, ntaba

nk - nkomi, nkɔson

~~np~~ - npalan, npogotigi, npan, nperɛ

nb - nburu, nbili.

~~ns~~ ns - nson, nsira, nsiirin

ng, -ng - ngomi, ngolo, ngorongo

nc - ncɔɔm, ncimin

nd - ndɔɔɔ.

dafalenw ye kulu saba ye : dafalen gansanw, dafalen sama-

dafalen gansanw

o ɔ a e e u i

dafalen samalenw

ii - miiri

oo - kooro

aa - baara

ee - feere

ee - feene

ɔɔ - kɔɔri

uu - duuru

nunna dafalenw

in - sin, bin, pintin

an - tan, fan, banji

un - kun, sun

on - kolon, bulon, kon

ɔn - nɔn, gɔngɔn

en - den, sen

ɛn - den, denen

kunnas ebenni · babolo, baalan, babɛɛ, baaritala, ja, jaabi
jaba, jaasi, dɔgɔ, donfini, dɔrɔngɔn, dɔgɔkɛ, dorogo, dubalen,
digon, jenbe, juurali, feene, feere, gintan, miiriya.

kanɛ

kanɛ ye mankan ye min bɛfo kan bɔ ko kelen

mii ri, sɛɛ, nɛ, bi, ri.

kɔksili · kɔɔ tɛ kanɛ la, kɔɔ bɛ minnun na olu ye
taga ye · li, ji, su...

Dape

Dape ye kanɛ walima kanɛ kulu ye kɔɔ ni nɛci bɛ
min na kumasan kɔɔ, n'a bɛɛ bɛ sɛ bɛ n kelen ye

Misali · A ye fini san

fini ye dape ye, kɔɔ b'a la, a nɛci ye dafa ye

Kumasan

Kumasan ye dape w sigisigilen ye pɔgɔn kɔ ka hakilina

dafale bange · A bɛ damine ni siginiden kunba ye, ka laban

ni tomi ye. Kumasan tɛ taa fɛn dama dɔw kɔ, n'olu

ye : - wale kɛbaga

- wale

- wale demenan

- dafa

- ani kɔbila

misali · Musa bɛ taa foro la.

- Musa - wale kɛbaga

bɛ wale demenan

taa - wale

foro - dafa

la - kabila

a y'a kɔɔsi nonabila be se ka bila wale ke bɔga nɔ na.

an be se ka fo : a be taa foro la

nin kumasen in na, "a~ bilala "Musa~ nɔ na.

Denni

Ni dape fila be jɔgan kɔ kumasen na, ni fofo
be laban ni dafalen ye, ni filanan be damine ni dafalen ye,
dafalen fofo bi den denma be bila a nɔ na

misali · a ye a san - a y'a san

a ye a fo - a y'a fo

a ye a fo a ye - a y'a fa ye

· kɔɔsili · a ye "ɛ~", "ɔ~", "ɲ~" se be denni damine. "e~",
"o~", ani "ny~" nɔ na.

Duguyiriwa tɔn tɛmɛsiraw

Kuma nebila

Nin gafe in labenna seriwusida fe, min ka baara nesin-
nen be duguyiriwa ton, walima jekabaara ton nemogow,
walima dugu nemogo werew laadili ma yiriwali hukumu
kono.

gafe in kekun ye ka hakilina kura d'u ma yaasa u
se ka dugu mogow demecogo min jekabaara la.

gafe in kono, temesira duuru be na fo, ni nemogow be
na temen'olu ye yaasa u ka baara benogoya u bolo
cogo min.

duguyiriwali temesiraw

Ni duguyiriwa ton mogow be fe ka baara kolo girinw
ke dugu kono a ka kan u ka temesira duuru ninu labato

temesira folo

hakilijakabo dugu geleyaw kan

jekafu kono, nemogow be se ka dugukono mogow deme
ka geleyaw jira minnu be dugumogo yerekun kan.

Kun jumen b'a to a be fo ko ka geleyaw ta minnu
be dugu mogow yerekun kan?

- bawo n'o kera u b'u cesiri feerew jinini la.

- jagon faamuyabali te na soro a la.

jekafu in kekun ye yaasa jama be se ka geleya
ninu ye jagon fe cogo min, wa u ka don k'a fo u
be se k'u lateme jagon fe.

dugu geleyaw be se ka don cogo jumen?

Sanni nemogow be jama kafa jagon kan, a ka kan u
yereka dugu geleyaw don folo.

u be se ka geleya ninu don ni sira minnu ye olu file:

- u yereka kolsili.

- baro mogow fe duw kono

- jagonne jekuluw fe in'a fo cesw, musow, ani denmisenw
k'u miirinataw jininka.

Ƴemogaw be teme sira folo in laban ni gele yaw sugandili
ye minnu be jama kun kan.



teme sira filanan.

Ƴemogaw ninnu be dugumogaw deme ka geleya kelen
sugandi geleya ninnu na, k'u hakilijakabo o kan kosebe.
Sugandili in hukumu kono, hakilijakabo ka kan ka kefen
minnu kan olu filanin ye.

- geleya in bedon ni misali minnu ye dugu kono.

- geleya in tinida waati surun wala waati jan
kono.

- geleya in bemogaw hake minnu kun kan dugu kono.

Ƴatemine in bannen ko, jama be ben a kan ga geleya
kelen sugandi.

hakilijakabo ka kan ka kefen werew kan, n'olu ye.
- geleya in baju jinini, o jinin in kono u be se
ka wele bila donnibagaw ma. geleya in baju jinini
nafa ka bon kosebe, bawo ale de be se ka ke sababu
ye ka feerew jinini mogaya.

- Ƴemogaw be tonsigi ke yaasa ka dugumogaw yere
ka donnita don geleya in baju kan.

Ƴemogaw be teme sira filanan in laban nin kunnafoni caman
ye geleya in baju kan.



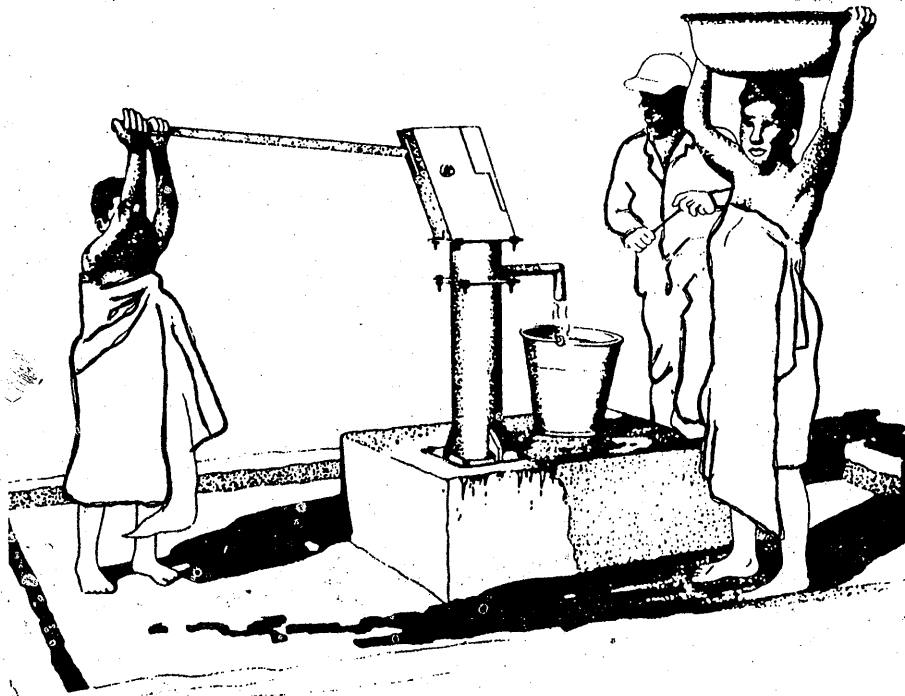
temesira sabanan.

feerew jinini : hakilijakabo in senfe baju minnu sarɔla,
jateminɛ bekeyaasa feere bese ka sarɔ min na teliya la.

Nka o b'a sarɔ an ye feere caman bila jɔɔɔn kɔɔ.
waati jan ka kan ka kefeere jinini la. anka

kan, k'a baasi n'a nafa da jɔɔɔn kɔɔ, yaasa dugumɔɔaw
bese ka sugandili kecogo min feere ninnu ce.

hakilijakabo geleya kan, feere jinini, feere kelen sugandili
nin bee ba ketonsigi de senfe, jama fe.



temesira naaninan

feere sugandili ko, baara ka kan ka kecogo min

- baara ka kan ka temesira minnu fe ., k'o bee fo.

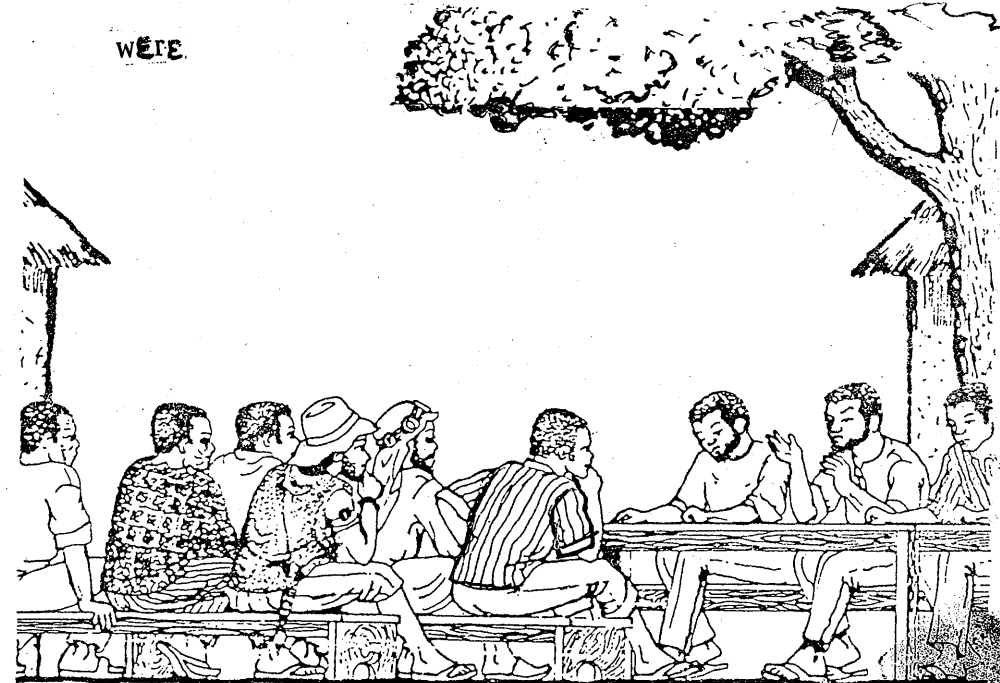
- Ka jɔɔɔɔw pereperelatige ani u kebagaw.

- minɛn hake, wari hake min ka kan ka don baara in
da fe ani mɔɔɔ hake min ka kan ka baara in ke, k'o
bee fo.

- baara misenw ka kan ka ke waati min kɔɔ o bee ka
kan ka pereperelatige.

kɔɔsili : ni dugu fanga doron tɛse baara in donin kɔɔ
(i n'a fo minɛnw, walima wari), a bese k'aw kanɔ

“odiki” walima “komite de dewelopeman”, wali dɛmenbagaw
wɛɛɛ.



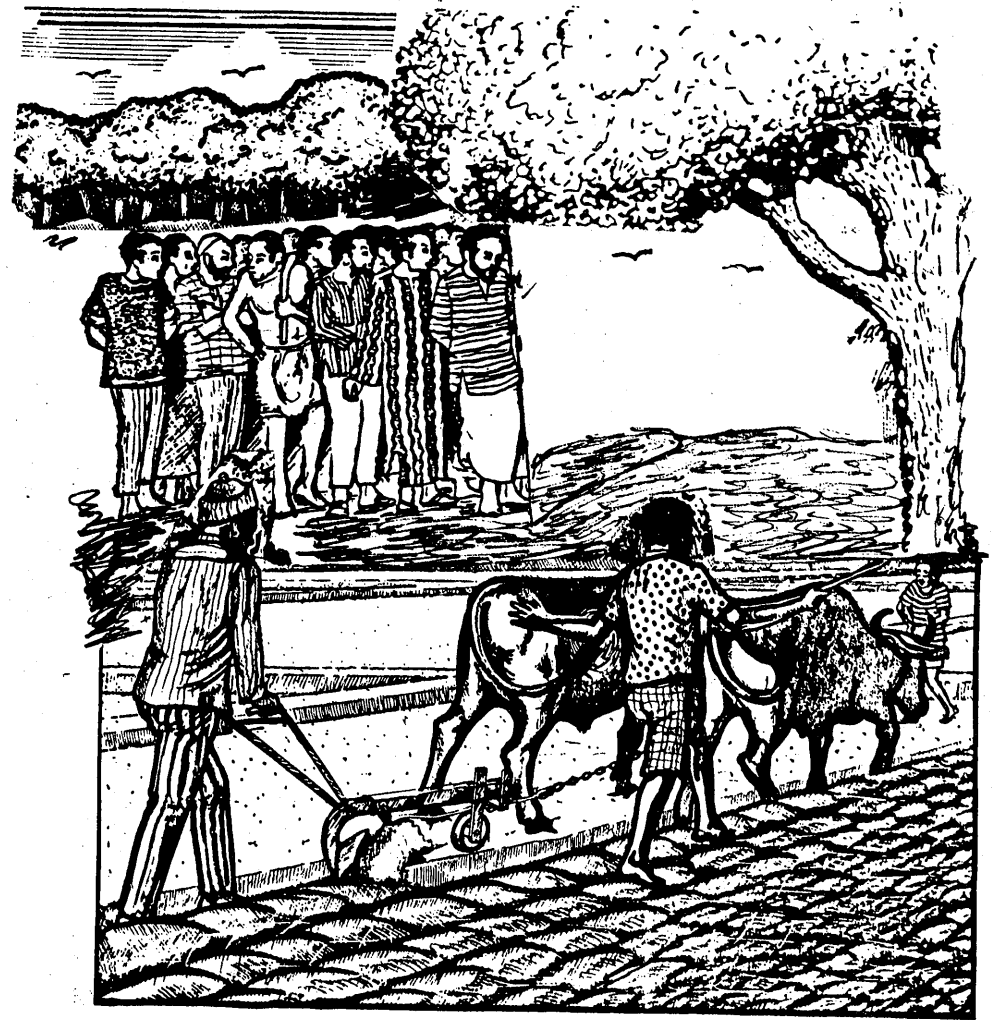
baara kɔɔsili, baarakɛlaw d'Emeni, ani baara kiimɛli
baara kɔɔsili bɛsinsin fɛminnu kan.

- k'a file ni baara bɛkɛ a cogo la
- ka baarakɛlaw dusu gɛɛɛya baara kɔɔɔ,
- ka ɲɔɲɔɲɛ kunkurininw kɛ, fiɲɛ bɛ yɔɔɔ minnu

k'olu bɔ baara kɛcogo in kɔɔɔ, a ka kan ka taa
tabolo kura min kan k'olu fɔ.

Kiimɛli bɛfɛn minnu kan, o ye ka nafa sɔɔɔɔɔɔɔ baara
kɔɔɔna na walima a ban tuma ani nafa min tun kafora
baara daminɛtuma ani nafolo min donna baara in na
k'olu sanga ɲɔɲɔɲ na.

Kiimɛli in kɔɔɔ, cɛsiri min kɛra ani gɛɛɛya min sɔɔɔɔ
baara in kɔɔɔ, o bɛɛka kan ka fɔ, o bɛbaara na taw
kɛli ɲɔɲɔɲa kosɛbɛ.



"Kunnafoniw minnu dira aw ma nin gafe in kano an hakili
la u bese ka keaw demenanw ye a ka duguyiriwa
baaraw la. Tuma o tuma aw ye gafe in ta k'a kano
fenw laje.