

THE KATHY JAMES

Dr. James H. James, Jr., is a member of the faculty of the University of California, Los Angeles, where he has been teaching since 1965. He is also a member of the American Psychological Association and the American Psychiatric Association. He has published numerous articles in the field of psychology and has been a frequent speaker at national and international conferences.



Dr. James H. James, Jr.

Dr. James H. James, Jr. is a member of the faculty of the University of California, Los Angeles, where he has been teaching since 1965. He is also a member of the American Psychological Association and the American Psychiatric Association. He has published numerous articles in the field of psychology and has been a frequent speaker at national and international conferences.

THE KATHY JAMES

Dr. James H. James, Jr. is a member of the faculty of the University of California, Los Angeles, where he has been teaching since 1965. He is also a member of the American Psychological Association and the American Psychiatric Association. He has published numerous articles in the field of psychology and has been a frequent speaker at national and international conferences.

Dr. James H. James, Jr. is a member of the faculty of the University of California, Los Angeles, where he has been teaching since 1965. He is also a member of the American Psychological Association and the American Psychiatric Association. He has published numerous articles in the field of psychology and has been a frequent speaker at national and international conferences.

Daramani Tarawele

HAKILIMAYA

Gafedilanyoro : LIBRAIRIE TRAORE BP 3243 Bamako MALI
Gafedilanyoro ni gafe feereyoro min be TARAWELELA
Wolofobugu Bolibana BAMAKO MALI JAMANA KONO
BP 3243 Tel 22 25 85

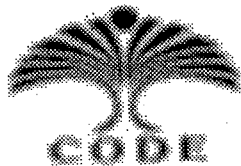
LIBRAIRIE TRAORE - Bamako BP : 3243 Tél : 22 25 85
Editions - Diffusion.

GAFE KONKOW

Nebila	1
Nkunnin kelen	2
Gasi	3
Kuncɛba	4
Tangabali	5
Denmisɛnya	6
Bolo caman	7
Sinji	8
Sira kura	9
Bolo kura	10
Jigi	11
Fonɲenakuma	12
Sigi kele ntan te	13
Senyerela	14
Banmaana	15
Ɔogontopotoli	16
Sigi goyabaga	17
Walidɛmɛ- Ɔogondɛmɛ	18
Bangebɛaa ka dungare	19
Bendugu	20
Ne Ɔanibaato	21

REMERCIEMENTS

Les Editions "LA RUCHE A LIVRES" de la LIBRAIRIE TRAORE remercient :
CODE (Canadian Organisation for development through Education)
et
AUTOGRAPHE (Projet d'appui à l'Édition)
pour la part importante qu'ils ont prise dans la réalisation du présent ouvrage à
travers leur aide technique et leur soutien financier



WALEJNUMANDON FOLI

*Tarawelega gafedilanyoro ni gafefeereyoro nemogow be foliko juman
ni tanunli ke Kanada jamana togolakubew ye ,olu minnu be Bamako
n'u togo ye "KODI" ani OTOGARAFU". Olu de ka dema y'a to nin
gafe'in dilanna ka je*

© LIBRAIRIE TRAORE Bamako 1994

Toute reproduction, traduction, adaptation, même partielle, par tous procédés, en tous pays, faite sans autorisation préalable, est illicite et exposerait le contrevenant à des poursuites judiciaires

NEBILA

Bee sonn'a ma ko kalanbaliya ye dibi ye. Kabini balikukalan donn'an faso kono, jama y'i nesin a ma. Caman ye donniya soro a sababu la an ka dugubaw n'an ka cikeduguw kono.

A fora fana ko don o don, tulo be taa kalan so. N'o ye tije ye minnu ye donniya soro balikukalan na, olu to tora yerekalan ye. Ni yerekalan te, u be segin kalanbaliya dibi la.

Gafin dilanna yerekalan kama, a dilanna kalanden jolenw kama, a denmisenw n'a mogokorobaw.

Bee k'i cesiri yerekalan fe

Daramani Tarawelega

N kunnin kelen

Fara-farali kera gabaw ni dubaw cikan ye,
Benbaliya ni kele ye gabaw ni dubaw fara,
Fara-farali ye magow barika ban pewu.
Bee k'a kelennin n'a ka denbayanin kelen,
Hakilina kelen, juguya, hakilina jugu,
I be na magow bolo, i be taa magow bolo.
Konokulu wulikan ye mankan ye,
Ji ye jage fanga ye, jama ye mago fanga ye,
Bawo bolonkoni kelen te bele ta.
Kelennasigi ma ben hadamaden ma,
Kele ka farali ye hakilidesewale ye ;
Soro yaada ni fadenya juguya be farali ke,
Segen jugu kana desebaato sigi a kelen,
Fa ni yaada kana mogo sigi a kelen.
I nana magow bolo, i be taa magow bolo,
N'i y'i bolo kelen wuli k'i mago te mogo la,
Kelen do fana korota ko mago mago t'i la.

Daramani Tarawele



Gasi

Den be hake soro ba fe,
Ba be hake soro den fe,
Den be hake soro fa fe,
Fa be hake soro den fe,
Muso be hake soro ce fe,
Ce yere be hake soro muso fe,
Sigi fan si gasintan te, tije na.
Ce ka soro te basigi muso ko,
Fa ka soro be yiriwa denw fe,
Tononibanbali be fanga jaasi,
Tononibanbali be soro nagasi,
Juguya be soro nagasi...
Gatigi ka gadenw gasi sigi,
Gasisigi ye horonyawale do ye,
Wale min be siran hake ne.
Ni ye hake mennen ye sira la,
A taara bere kene nini.

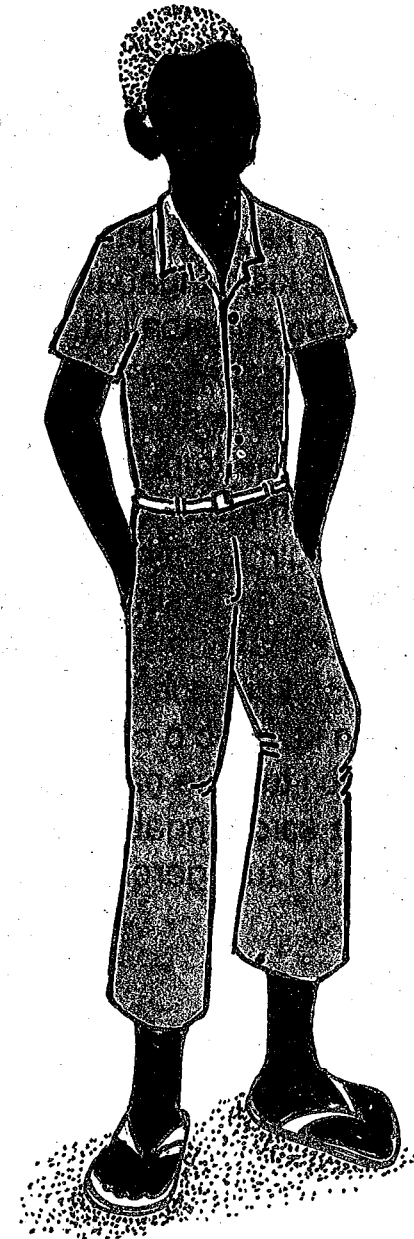
Daramani Tarawele



Kuncɛba

Kuncɛba ma si ye mɔgɔ si kun na,
Kuncɛba y' a yere ke woro ye,
Kuncɛba ye tɔw ke kamanw ye.
kuncɛba y'i sinsin fisamanciya kan,
K'i yere fisaya bee ka keta ma.
Kuncɛba ma majiginni don horonya ye,
A ye majiginni ke kuntanya ye.
Mogobaya y'i sinsin majiginni kan,
Ladamu konuman y'i sinsin majiginni kan,
Ka kuncɛbaya ke kodɔnbaliya ye.
Ne kera kuncɛba ye, ne ma kodɔn
Ne kera kuncɛba ye, ne ni mɔgɔ ma ben.
Donniya te mɔgɔ kuncɛ bonya,
Nafolo te mɔgɔ kuncɛ bonya.

Daramani Tarawele



Tangabali

Ne siginogon kera tangabali ye,
Ne ma se ka kisi tangabali ma.
Ne ye n mabo tangabali la,
Ne malola tangabali ma,
Tangabali ye ne segere para,
Tangabali ma ne to malo ye.
Ne siranna tangabali ne,
Ne ye n majigin tangabali ye,
Tangabali ma ne to siran ye.
Tangabali te malo, tangabali ma siran.
Ne siginogon kera noni ye,
Ne mana n ke cogo o cogo,
Tangabali b'i turu ne na puru,
Ne ma fura soro tangabali la.
"I ne tugu, k'i i tulo geren, k'i nen kunun"

Daramani Tarawele



Denmisɛnya

Denminsɛnya ka di kosɛbɛ,
Denmisɛnya tulonke ye wajibi ye,
Denmisɛnya tɛ mɔgɔ tɪnɛ,
Bawo tulon tɛ sebɛ sa.
Bi denmisɛn ye sini mɔgɔkɔrɔba ye,
Yɛrɛmabila ma mɔgɔkɔrɔbaya nɛsigi.
Bannyerɛye ye sini mɔgɔkɔrɔba sɛgɛnnen ye,
Denmisɛn ni barika bɛ wuli,
Denmisɛn bɛ barika nini,
Denmisɛn bɛ dugawu nini,
Denmisɛn bɛ sɔn bangebɛaa ye,
Denmisɛn bɛ sɔn a yɛrɛ ye.
Bannyerɛye ma barika nini,
Bannyerɛye ma dugawu nini,
Bannyerɛye ma sɔn bangebɛaa ye,
Bannyerɛye bann'ɔ yɛrɛ ye,
Kolɔn jugu jiri bɛ kari a yɛrɛ kɔnɔ.

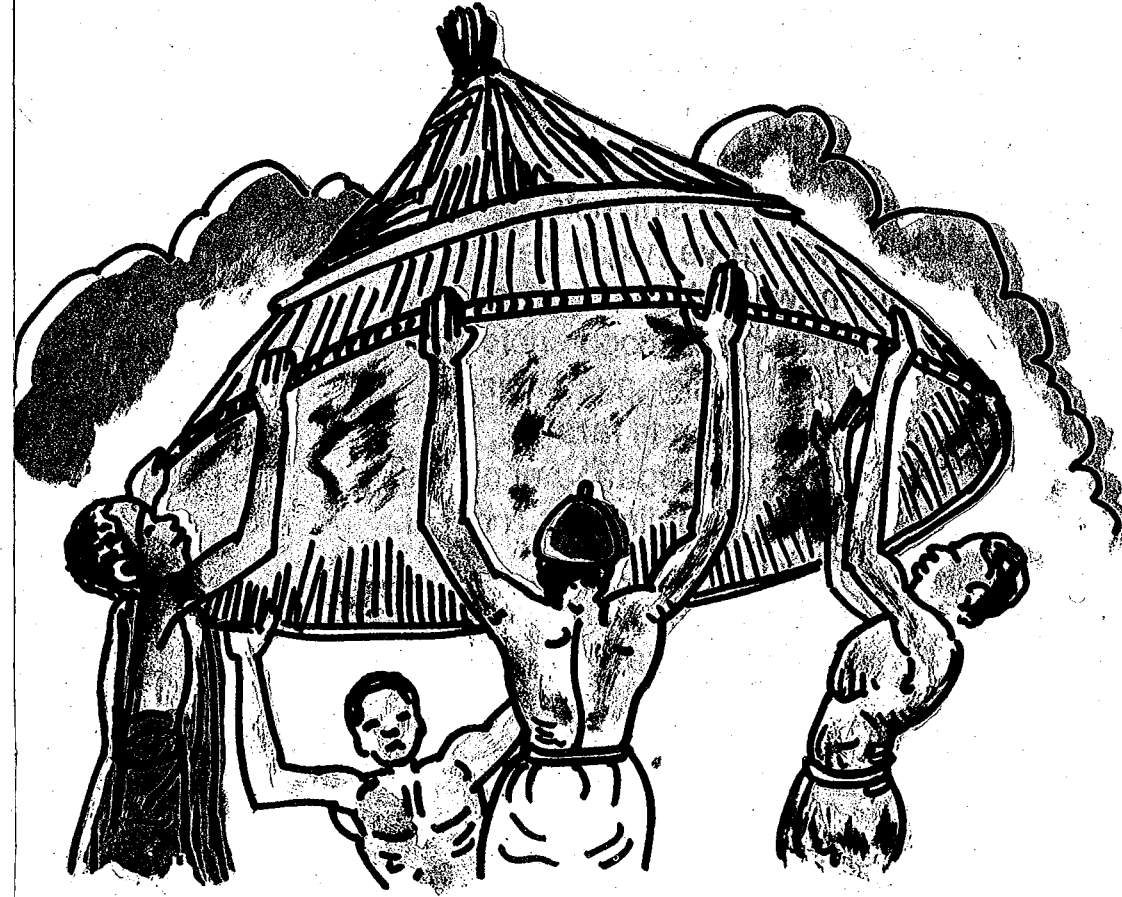
Daramani Tarawele



Bolo Caman

Dugu te jo baara ko,
Mogoya te dilan baara ko,
Baara ye jon horonyanan ye.
Forobabaara ko bolo caman,
Jonforo ko bolo caman,
Jekabaara wajibiyara duguw ma.
Duguw ka yiriwa be jekabaara ko,
Mogo kelen-kelen fana ka bonogola be ten,
Jekabaara diyagoyara sigida la bi,
Jama bee ka nafa ye kelen ye,
Nafaw sirilen don jogon na dugu konon.
Naniya kelen be waleya bolo caman fe,
Dugu te korota ni duguden bee bolo te,
Bee bolo kalansolen ka baara kunbe.
Jekabaara ni hakili numan, a barika.

Daramani Tarawele



Sinji

Sinji, badenya, balimaya sinji,
Sinji ma soso, sinji ma nkalon tige.
Sinji, balo sinji, sinji, tin sinji,
Muso be balo a sinji kama,
Muso be sa a sinji nofe ,
Sinjimaw ta ye nogon ye,
Sinjimaw ma ban nogon na,
Sinjimaw be sa nogon nofe.
U ka kele be sisi, a te mene,
Sinji ye jo ye, a te farali fe,
Faralikela ni negan, a ni nimisa.
Sinjitugula ni balimaya, a ni foli.
Nka sinji ma tinfo bali,
Bawo tije te baden fen ye,
Tije ko ka sinji saniya, k'a barika.

Daramani Tarawele



Sira kura

Kana sigi bee wulituma na,
Ji kura kera ka ko fa tewu,
Fan bee, bee be jerge kene kan,
Bee be jerge kan fan bee.
Kana sigi, fiye wulila,
Bee bolo b'i kunminen na.
Diye ferekela, fonida t'a la,
Jama, duguw ko jogon ma,
Ka ben ni timinandiya kanu,
Ka balikukalan ke sinsinbere ye,
K'u fanga ke barikama kelen ye,
Ka jekabaara ke yiriwali sira ye,
Ka duguyirawatn ke kelekeminen ye,
Walasa u wosi b'u folo nafa.

Daramani Tarawele



Bolo kura

Fine cira, mogo ma se k'o bali,
Sanji jiginna, mogo ma se k'o mine,
Tile bora, mogo ma se k'o tunun.
Ni bana nana, o be ke ƙƙori-ƙƙori,
Ni keneya nana, o ni ganganduru,
Ni saya nana, o ni ƙƙisumajigin,
Soro mana laada sigi, fere laada,
Koli mana na, o b'o laada wuli.
Tuma si, diƙe ma to bolo kelen kan,
Diƙe k'ale nomi, a ni yeƙema-yeƙema,
Diƙe jora cogo la min ka d'a yere ye,
Mogow ma son diƙe jocogo o ma,
Limaniya soroli geƙeyara diƙesosigi la.
Diƙe ma wuli, diƙesosigi ni mankan,
Cawu-cawu ! bee cawu-cawura.
Jasigi ka kan bee ye diƙesosigi kono,
Tile min mana bo, o be ja diyagoya.

Daramani Tarawele



Jigi

Ne kunkotigi fora n jigilamogo ko,
Ne kunkotigi jigi kari la,
Ne ni n kunko tora nagon na.
Ne kunkotigi sera n jigi ma,
Ne jigi ye ne jigin n kundoni na.
Jigi be mogo lafiya,
Jigi ka fisa ni fa ye,
Ne den don, ne bangebaba don,
Ne balima don, ne siginagon don,
Ne ma nine n donbaga gansan ko.
Nka, nesigi nagon jigi te,
Ne ye sini nesigi, nesigi ye jigiya ye,
Ne tena fo nesigi ko jigiya la.
O kama ne ye n jigi folo ke n wosi ye,
Ne ma jigintanya kunko ne.

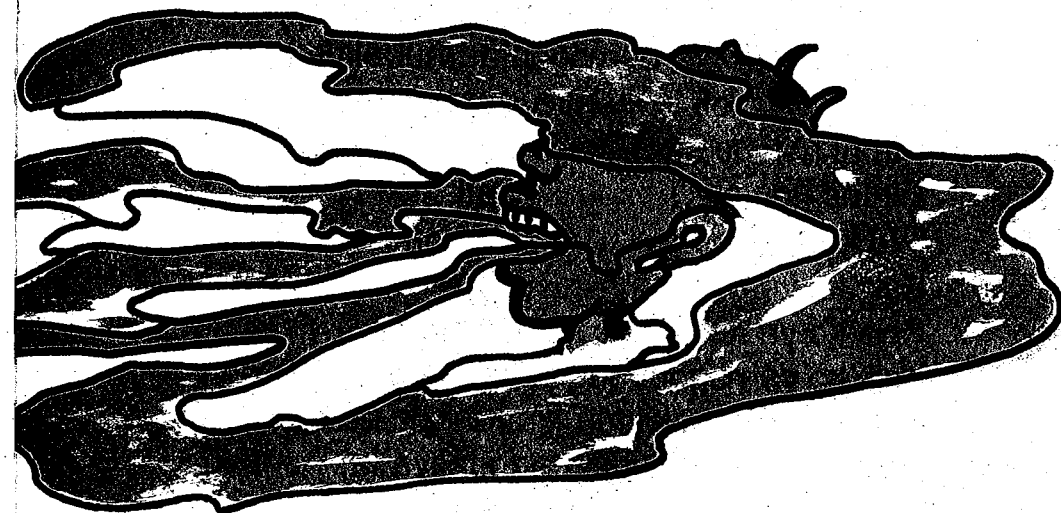
Daramani Tarawele



Fɔŋŋɛnakuma

Fɔŋŋɛnakuma, ne m'a lamɛn, ne m'a jate,
Bawo, ne ma fɔŋŋɛnakuma tigi dɔn.
Waati bɛɛ, fɔŋŋɛnakuma ko «a y'a mɛn»,
Waati si, fɔŋŋɛnakuma m'a ye a jɛ na.
Fɔŋŋɛnakuma, naafigi kelen y'a mɛn,
Fɔŋŋɛnakuma, naafigi kelen y'a labɛn,
Mɔgɔbilanɔgɔnna y'a yalon k'a yaala.
Fɔŋŋɛnakuma ko ne cɛ bɛ jɛnɛya la,
Fɔŋŋɛnakuma ko ne muso bɛ kakalaya la,
Ne ka n cɛ kɔyaala kɔsɛbɛ, kɔsɛbɛ,
Ne ka n muso sɛgɛsɛgɛ kɔŋuman,
Muso m'a ye, cɛ m'a ye yɔrɔ'si.
Fɔŋŋɛnakuma, yɔrɔtɪnɛna, bɛ du ci.
Ne ye n tulo ci fɔŋŋɛnakuma ma.

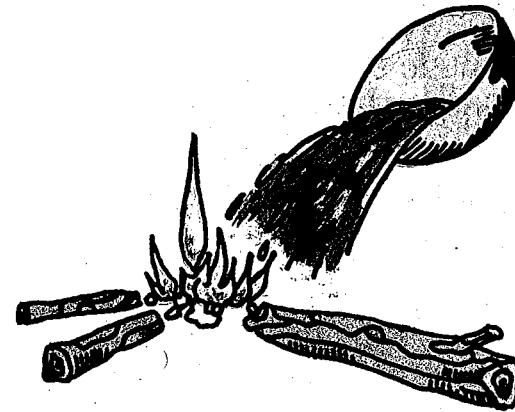
Daramani Tarawele



Sigi kelentan te

Sigi kuntaala jan fara a surunma kan,
Sigi kelentan te, kele ye wajibi ye sigi kono,
Fogonko ni dalawoƴo ye sigi kelanw ye,
Kelan minnu be bo fogonfaamubaliya kono,
Kuma ni nefoli y'olu fura duman ye.
Nin ni nen be sigi la da kono,
Nin be nen cin waati ni waati,
Olu ka kele be ban waatinin kono.
Kele ko ye diya ye, sigi diya,
Kele ko ye teriya ye, teriya duman,
Kele ko ye fogondon ye, ka fogon sebe don.
Kele be ban, hakilima fila ka kele be ban,
Nefoli ni faamuyali b'a ban teliya la,
Ka sigi kuraya ani k'a barika.

Daramani Tarawele



Senyεεla

Dusu bora, dusu ye dusutigi keɛɛ,
Hakili ma tajurusarala labo,
Miiri ye sinikanfola dese.
Dusubo, tajurusara ni sinikanfo,
Olu ye takurunnaw ye sigi kono,
Takurunna minnu te sa joona.
U tasuma be sigiyoro kalaya,
Sigiyoro tasuma min te sa sabali ko.
Sabali be dusu faga a tigi ye,
Sabali be miiri tono bo,
Hakili be sabali tono dun.
Dusu kana dusutigi keɛɛ,
Sinikanfola ka miiri sini na,
Hakili ka tajurusarala labo,
Sigi be diya ntami-ntami.

Daramani Tarawele



Banmaana

Dalawoyɔ m'o kunbo
Mogow ka ban jogon na.
Joli de yan ke jogon ta ye,
Teriya ni kanu de y'an ke kelen ye,
Do te se ka ban do la mogoya kono.
Do kana a bisigi ten,
Ko do ta ye ban-n-na ye,
Jogonfaamubaliya nana n'o ye.
Ne famana kaarimasina ma,
Ne balima ye ne ke bolokofefen ye,
Kaarimasina banna ne na.
E somogo ma ban-n-na yoro ye
Kaarimasina ma ban-n-na don,
A ma don k'a latige,
O jalaki ka ban mogoya la.

Daramani Tarawele



Ɗogontopotoli

Timinandi ye korotobali ye.
Timinandi tugura bannyereye la,
Bannyereye sonna bee ye.
Timinandi denna salabaato kerefe,
Salabaato kera baarakela ye.
Timinandi ye yelemabali yelama,
Bawo timinandi ma dese ko la.
Timinandiya ye sabali sawura do ye.
Timinandiya ye ben sinsinnan ye,
Bangebaaw k'u timinandiya denw koro,
Furugonw k'u timinandiya furu ye,
Baarugonmaw k'u timinandiya baara kama,
Kodonnaw k'u timinandiya kodonbaliw nefe,
Bee k'i timinandiya teretete,
Segen don, don be ce kan,
Lafiya don sa, ce be don kan.

Daramani Tarawele



Sigi goyabaga

Benbaliya te here seere ye,
Benbaliya ma deli ka ko dilan.
Benbaliya m'a to badenya da,
Benbaliya tena a to siginogonya da.
Benbaliya ye terimaw fara,
Benbaliya tena furunogonmaw kala,
Mogoya gelayabaga kera benbaliya ye ;
Si sen te pan konin si kan,
Si t'i ne tugu si ta kan,
Si ma son nalomaya ma sigi la.
Kelebanbali ye tineni ye sigi kono,
Benbaliya ye farali ye sigi kono,
Benbaliso ye tomon ye don do,
Benbalidugu, benbalijamana ye tomon ye.

Daramani Tarawele



Walideme, ɲogɔndeme

Den ko bangebaa k'a deme,
Bangebaa fana ko den k'a deme.
Faantan be faama ka deme ko,
Faama te diɲe diyabo ni faantan te,
Diɲe dara ni deme ye, ɲogɔndeme,
Faama ni setigi ka faanta ni sentan deme,
Bawo faama sadon, setigi te kaburu sen,
Setigi fana sadon, faama te dinge sen,
Faantan, sentan y'o kaburu senbaga ye,
Beɛ be bo do ka deme nu ma waati do la.
Nka, kana sigi fo walideme nadon,
I yere deme ni dusu n'i yere barika ye,
Do k'i yere ye, dokebaga deme ka di,
Walideme nadon ye dokebaga tanudon ye

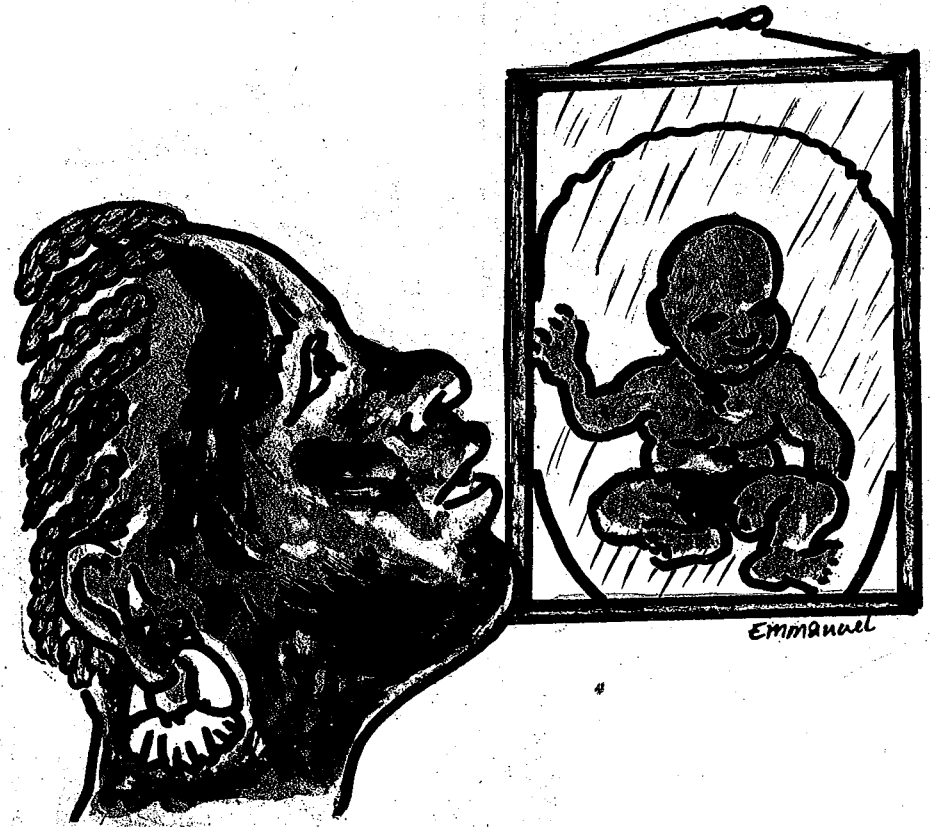
Daramani Tarawele



Bangebaa ka dugaren

Bangebaga sago ye diɓeso koɓo,
A den ka fisaya n'a ye diɓelatige la,
Den ka ke nafolotigi ni faama ye.
Den diyanye te ban bangebaa dusukun na,
Bangebaga be den ke dugaren ye,
A b'a nekoɗo sanga ni waati bee.
Nafolotigiya ma soɗo, faamaya ma soɗo,
O bee boɗa masa Ala kelen na.
Dugaren cira bangebaga bolo, koba keɗa
Bangebaga jigintanyana diɓe koɓo,
K'a ka diɓesosigi ke fu ye a yere bolo,
Dimin te ban, kuma te furufuruku ma.
Dangali, bangebaa ka dangali ma fo,
Bangebaadugawu be fadenmaw danfara.

Daramani Tarawele



Bendugu

Ga benntan te ga sabaŋilen ye,
Dugu benntan te dugu duman ye,
Je benntan ye ben-ben-ben ye,
Sigi benntan ye sigilankolon ye.
Ben ye Bendugu sigi koŋuman,
Jekabaara ye Bendugu sabati,
Ben ye Bendugu soro yiriwa,
Bendugu yeelen kera taamasiyen ye,
Bendugu yeelen y'a lamini labo,
Duguyiriwatŋn y'o sababu ye,
Balikukalan y'o ngoŋya kosebe,
Ben folo ye balikukalanso jo.
Ni ben ma min dilan fewu,
Benbaliya t'o dilan abada.

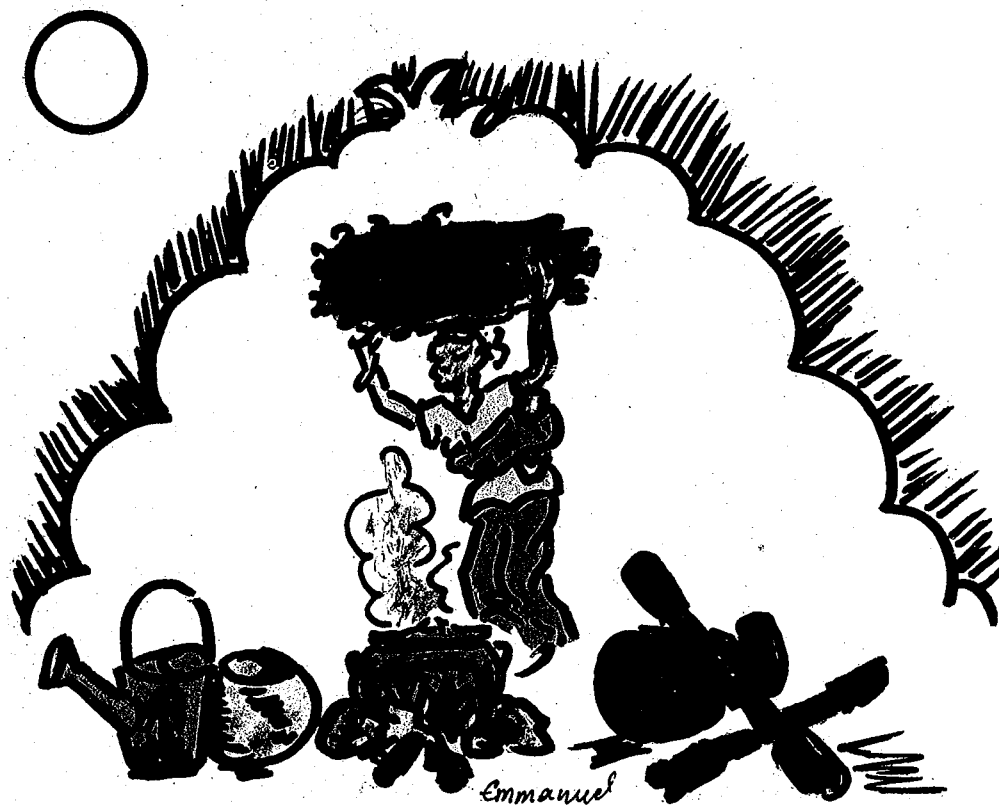
Daramani Taraweŋe



Ne janibaato

Don o don, nasongo be ne kan,
Doggo jenita be ne kunna,
Finikosage ye ne kunko ye,
San o san, ko ne ka fura san,
Ko ne ka n jo ni ga ka ferebo ye,
Dumunitobi ma ban waati si,
Ne ye dogo doni fo ka n kan surunya,
Ne ye nako son fo ka n ko kuru,
Ne ye nono yaala fo ka n sen funun,
Ne ye jage wusu fo ka n new bilen,
Finiko ni bugoli ni dusukasi ye ne koru.
Furu kera ne ma jonya ye, jonya jugu,
Ne kunko te wuli, n da ka se ka don a la,
Dugu kunko te wuli, ne hakilina ka don,
Dugubakonmusow k'olu be ne ye waati bee.
Ne ne nejima meenna sira la.

Daramani Tarawele



Imprimerie LINO
Bamako
Tél . 22 49 01

IMPRESSION FINITION

Achévé d'imprimer en Avril 1994

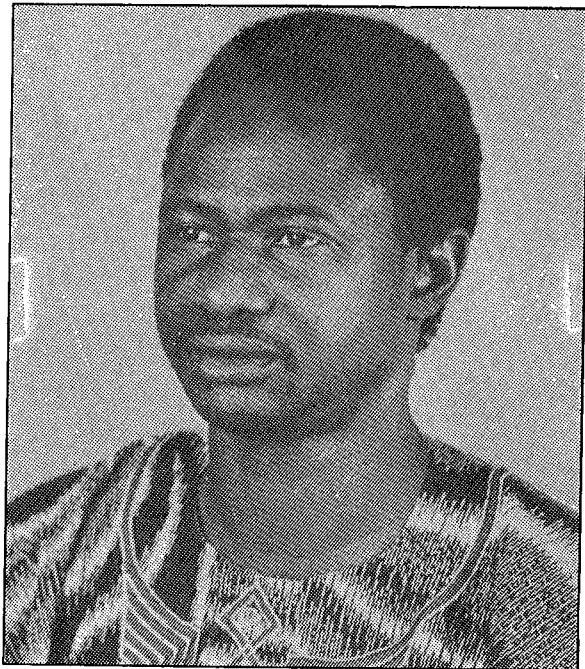
N° d'édition : 001/94 N° d'impression :

Dépôt légal : Mai 1994

Imprimé au Mali

HAKILIMAYA

Daramani Tarawele ka nin poyi ninnu ye welekan de ye , n'u lamenna hadamadenw fe, mankan,woyo, benbaliya ni sigitiye be ban hadamadenw ka sigi kono, a kera sigi fen o fen ye horonya la



Daramani Tarawele

Gafedilanyoro : LIBRARIE TRAORE BP 3243 Bamako MALI
Gafedilanyoro ni gafe feereyoro min be TARAWELELA
Wolofobugu Bolibana BAMAKO MALI JAMANA KONO
BP 3243 Tel 22 25 85